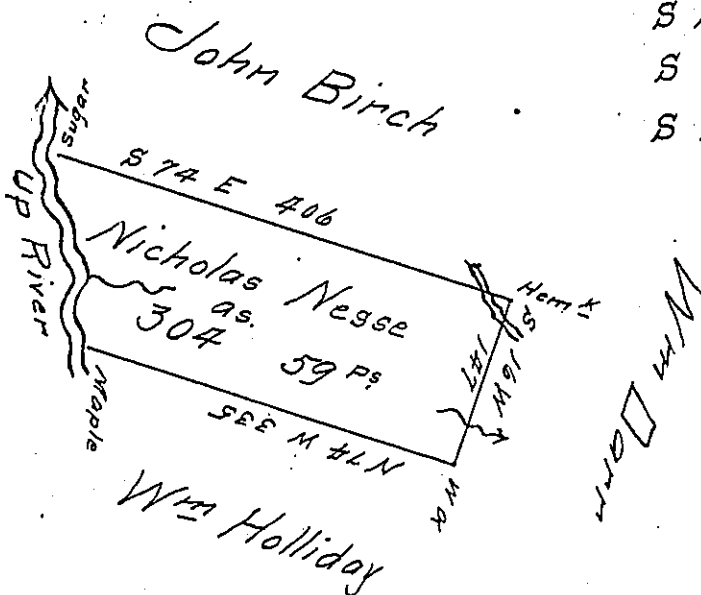


Courses & Distances from
Sugar below to Maple Above

S 38 E 26
 S 3 W 27
 S 18 E 40
 S 5 W 51
 S 18 E 20 to Maple
 164



Draught of a Tract of Land Situated in Chest Town-
 ship Clearfield County About 2 Miles below the Canoe place Con-
 taining Three Hundred Four Acres and Fifty Nine perches and
 the Usual Allowance of Six per Cent for Roads & Survey the
 29th of August 1828 in pursuance of an Application No 2379
 Dated 23rd Day of May 1769 Granted to Nicholas Nesse
 for 300 Acres

To Gabriel Heister Esq^r David Ferguson
 Surveyor General

Note the Above Survey Interfers Wholly with John Cummings
 warrant Dated 3rd August 1773 Surveyed 1775 and is Oc-
 cupied by Wm Holliday the Upper Line Old

D.F.

IN TESTIMONY that the above is a copy of the original remaining on file in
 the Department of Internal Affairs of Pennsylvania, made
 conformably to an Act of Assembly approved the 16th day of
 February, 1833, I have hereunto set my Hand and caused
 the Seal of said Department to be affixed at Harrisburg,
 this eighteenth day of January 1909.

Henry Horvath
 Secretary of Internal Affairs.